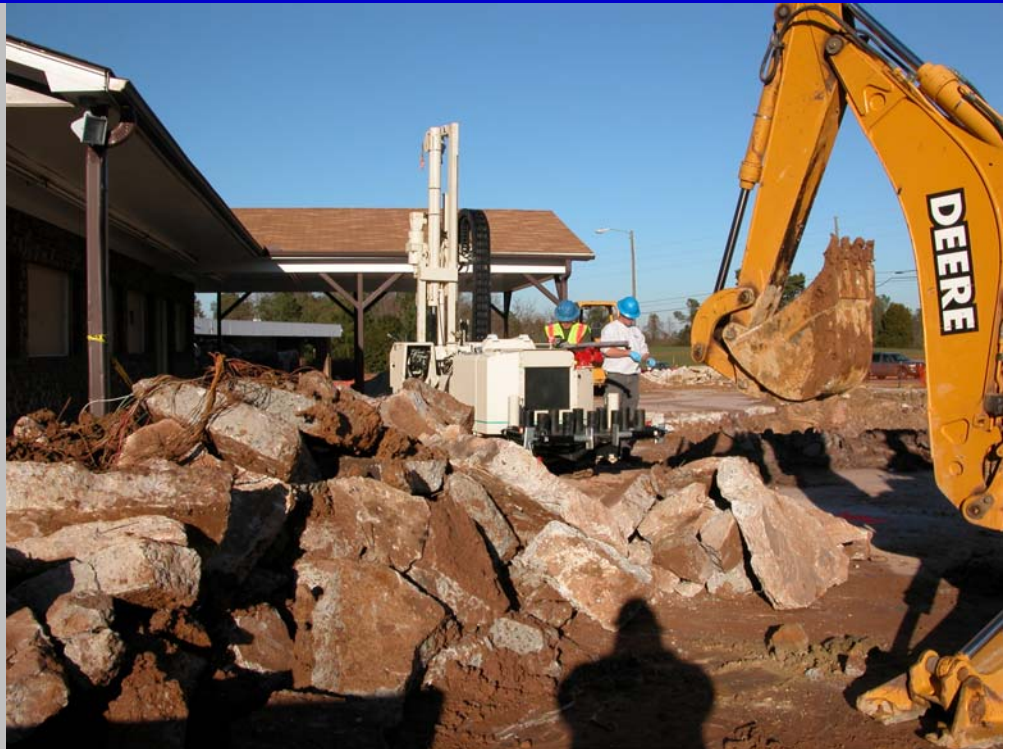


DRILLING SERVICES

Your Source for
Environmental Solutions.



TerraQuest offers in-house direct push and drilling services utilizing a 6610DT track mounted unit from Geoprobe Systems. The 6610DT unit is capable of drilling to depths greater than 50 feet. The compact size of the unit allows it to easily maneuver inside buildings, around houses, or in confined spaces where conventional rigs are too large.



Direct push sampling allows soil and groundwater samples to be collected faster and less expensive than conventional drilling. Contact us to see a demonstration or to discuss site-specific needs.

TerraQuest Environmental
Consultants, P.C.

100 E. Ruffin Street
Mebane, NC 27302

Phone: 919-563-9091
Fax: 919-563-9095

Email: mjbrown@terraquestpc.com